

Probe Software

Software for MicroAnalysis

Probe for EPMA

Probe Image

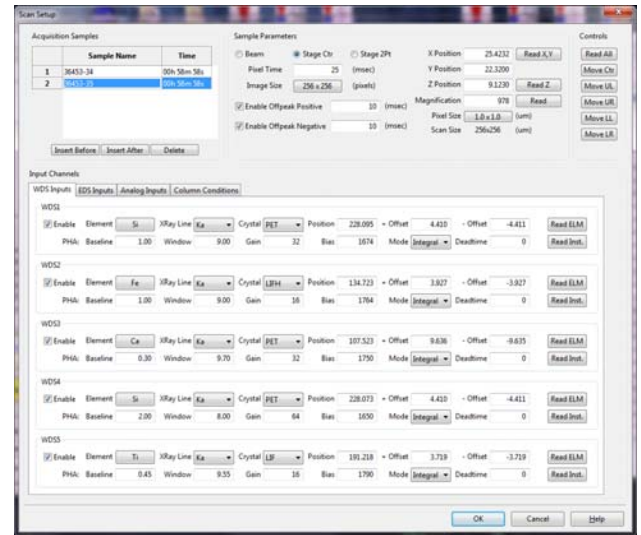
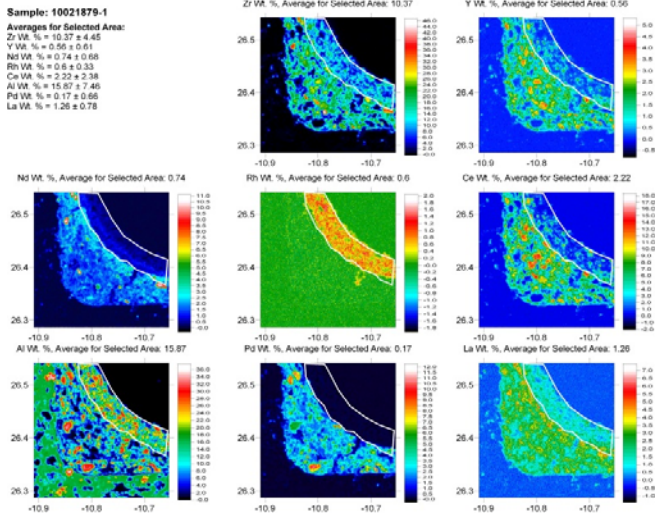
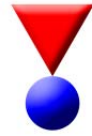
PictureSnapApp

Probe Image Quantitative X-ray Mapping

Probe Image for Background, Matrix and Interference Corrected Quantitative X-ray Mapping

Based on optimized C++ code for robust, high speed operation, Probe Image provides a complete solution for manual and automated analog signal (SE, BSE, CL, etc.) imaging, and x-ray (WDS and EDS) mapping of multiple samples under multiple conditions for JEOL and Cameca EPMA instruments.

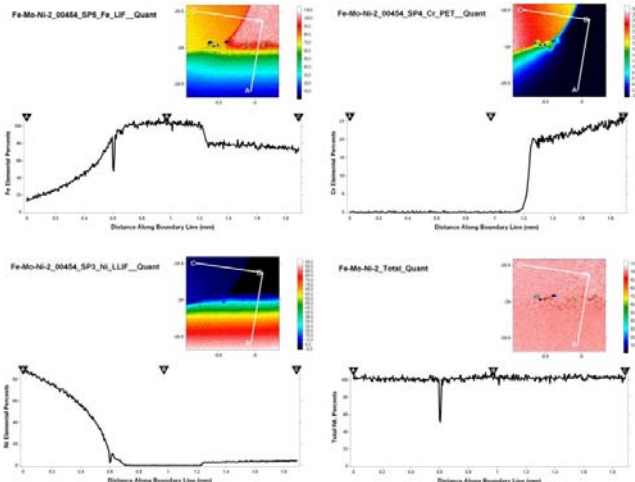
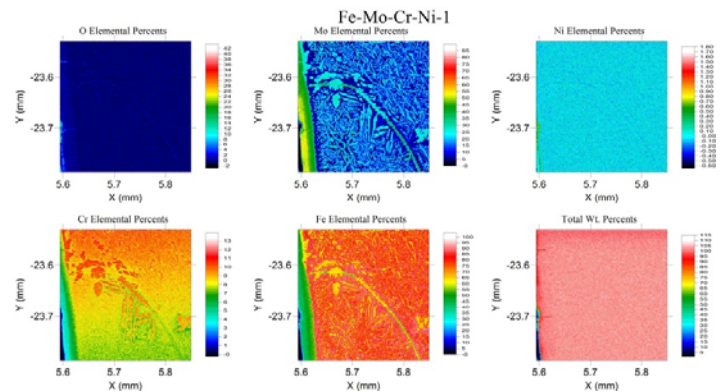
Probe Software, Inc.
885 Crest Drive
Eugene, OR 97405 USA
(541) 343-3400
sales@probesoftware.com
www.probesoftware.com



Automated Peak and Background Acquisition

Probe Image provides an intuitive interface for specification of all imaging and mapping acquisition parameters. Select all acquisition and automation options in a single window and

easily save and recall previous acquisition setups. All data is saved with 32 bit floating point precision to ensure that all digital intensities are preserved with maximum flexibility for subsequent qualitative or quantitative post-processing including total and oxygen by stoichiometry images.



Complete Quantification and Output

Probe Image utilizes quantification based on Probe for EPMA for correction of background (off-peak or modeled), matrix (analytical or high speed monte-carlo) and interference corrections and provides numerous automated outputs for generation of presentation quality reports including slice, strip and polygon area extraction.